

2024

2025

# Winter & Spring

## GO GUIDE



**REGISTRATION  
STARTS  
NOVEMBER 4,  
2024!**

### Seasons of Fun!

**RECREATION | EVENTS | PARKS | FACILITIES**





## Dear Residents, Park Participants & Visitors!

As the season changes, we are excited to share the changes in our programs. The beginning of the guide kicks off our wonderful wintertime activities such as ice skating and Hometown Christmas and ends with our programs designed to beat cabin fever to get you back outdoors in the spring. As always, we feature our year-round activities like yoga, Tae kwon do, dance and more.

We are always looking to better serve the community we love and hope that you will share your ideas with us. I encourage you to reach out to me and/or the staff to help us create wonderful programs, spaces, and activities.

Whether a long-time user or new to us, we want to thank you for being part of the Parks family. We wish you and safe and healthy winter season.

**Jen Jacky, Executive Director**

## Current Board of Commissioners

Daniel Noble, President, [dannoble@belviderepark.org](mailto:dannoble@belviderepark.org)  
Amy Nord, Vice President, [amynord@belviderepark.org](mailto:amynord@belviderepark.org)  
Mary Marquardt, Secretary, [marymarquardt@belviderepark.org](mailto:marymarquardt@belviderepark.org)  
Jean Twyning, Treasurer, [jeantwyning@belviderepark.org](mailto:jeantwyning@belviderepark.org)  
Gary Thacker, Commissioner, [garythacker@belviderepark.org](mailto:garythacker@belviderepark.org)

## Administration Information

**Jen Jacky**, Executive Director - [jjacky@belviderepark.org](mailto:jjacky@belviderepark.org) Ext 100  
**Melissa Merkel**, Superintendent of Administrative Services - [mmerkel@belviderepark.org](mailto:mmerkel@belviderepark.org) Ext 101  
**Aly Graham CPRP**, Superintendent of Recreation - [agraham@belviderepark.org](mailto:agraham@belviderepark.org) Ext 102  
**Jonathan Cudzewicz CPRP**, Superintendent of Parks - [jcudzewicz@belviderepark.org](mailto:jcudzewicz@belviderepark.org) Ext 103  
**Destiny Boss**, HR and Risk Manager - [dboss@belviderepark.org](mailto:dboss@belviderepark.org) Ext 104  
**Kristi Dummer**, Marketing Supervisor - [kdummer@belviderepark.org](mailto:kdummer@belviderepark.org) Ext 105  
**Katie Inman**, Recreation Supervisor - [kinman@belviderepark.org](mailto:kinman@belviderepark.org) Ext 106  
**Dawn Zenaty**, Administrative Services Assistant - [dzenaty@belviderepark.org](mailto:dzenaty@belviderepark.org) Ext 107  
**Jackie Logsdon**, Administrative Services Assistant - [jlogsdon@belviderepark.org](mailto:jlogsdon@belviderepark.org) Ext 108  
**Taylor Kuchenreuther**, Athletics Supervisor - [tkuchenreuther@belviderepark.org](mailto:tkuchenreuther@belviderepark.org) Ext 200  
**Carlos Villarreal**, Recreation Supervisor - [cvillarreal@belviderepark.org](mailto:cvillarreal@belviderepark.org) Ext 201  
**Katie Humphrey CPRP**, Special Recreation Manager - [khumphrey@belviderepark.org](mailto:khumphrey@belviderepark.org) Ext 600  
**Sean Cramer CPRP**, Special Recreation Supervisor - [scramer@belviderepark.org](mailto:scramer@belviderepark.org) Ext 601  
**Gina Ruvalcaba**, Special Recreation Supervisor - [gruvalcaba@belviderepark.org](mailto:gruvalcaba@belviderepark.org) Ext 602  
**Tony Williams**, Grounds Foreman - [twilliams@belviderepark.org](mailto:twilliams@belviderepark.org) Ext 300  
**Brian Willit**, Buildings Foreman - [bwillit@belviderepark.org](mailto:bwillit@belviderepark.org) Ext 301  
**Eric Marks**, Horticulture Foreman - [emarks@belviderepark.org](mailto:emarks@belviderepark.org) Ext 303

## EASY TO REGISTER!



### 1 ONLINE:

[www.belviderepark.org](http://www.belviderepark.org)

### 2 IN PERSON:

**Rivers Edge Recreation Center**  
Monday-Friday: 9AM-5PM

### Administration Building

1006 W. Lincoln Avenue  
Belvidere, IL 61008  
Phone: 815-547-5711  
Fax: 815-544-4648  
M-F: 9AM-5PM

### Winter/Spring Closings

All Facilities:  
Nov. 11 (Veteran's Day)  
Nov. 28 & 29 (Thanksgiving)  
Dec. 24 & 25 (Christmas)  
Dec. 31 & Jan. 1 (New Years)  
April 18 & 20 (Easter)

### Rivers Edge

**Recreation Center**  
1151 W. Locust Street  
Belvidere, IL 61008  
Phone: 815-547-9557  
**Registration Hours:**  
M-F: 9AM-5PM

### Building Hours:

M-F: 9AM-9PM;  
Sat & Sun: by reservation  
only

### Special Recreation Facility

6581 Reylon Drive  
Belvidere, IL 61008  
Phone: 815-547-5711 x603  
**Registration Hours**  
M-F: 3:45PM-6PM

### Prairie Fields Sports Park

1111 Fairgrounds Road  
Belvidere, IL

### Riverside Ice Arena

365 W. Locust Street  
Belvidere, IL 61008  
(815) 547-5711 x 500

### Baltic Mill

920 W. Lincoln Avenue  
Belvidere, IL 61008

### Splash Pad

reopens in May  
365 W. Locust Street  
Belvidere, IL 61008



# HOMETOWN Christmas

## LIGHT UP THE NIGHT PARADE FRIDAY, DECEMBER 6TH

Here comes Santa Claus, right down State Street. Come join us for the Light Up The Night Parade and make it your winter tradition. The parade steps off at 5:30PM.

All businesses & organizations are welcome to join the parade by entering a float or walking group. Candy can only be distributed by walking groups. The parade entry is free, but you must pre-register by November 29th. Entry forms can be found at [www.belviderepark.org](http://www.belviderepark.org) or by contacting Katie Inman at 815-547-5711 x106. Please email parade entries to [kinman@belviderepark.org](mailto:kinman@belviderepark.org).





# SPECIAL EVENTS - HOLIDAY

## Holiday Lights

Help us light up Belvidere Park and join our Holiday Lights Display! Express your holiday spirit with the community in a unique way. Businesses, organizations, schools, and churches are welcome to participate. Your organization can design or purchase your display to set up and take down in the park! This provides an opportunity to make your display unique. There is not a limit on size, but power requirements need to be considered. Let's bring the Holidays to Belvidere Park!

**Contact Taylor at [tkuchenreuther@belviderepark.org](mailto:tkuchenreuther@belviderepark.org) for more information on how to get involved! (TK) December 1 thru 31.**



## Cookies with Santa

Santa is coming to town, and his first stop is the Belvidere Park District to see you! Come to Rivers Edge to decorate a Christmas cookie, take pictures with Santa, listen to some Christmas music, and hear a Christmas story read by Santa himself! Children 5 and under must be accompanied by an adult (TK). **Location:** Rivers Edge Recreation Center • **Min/Max:** 10/25 • **Register by:** December 8

Code	Age	R/NR Fee	Date	Time	Day
<u>105081-01</u>	2-12	\$12/\$17	12/11	5:30-6:30 PM	WED
Additional Child:		\$6/\$11			

## Elf Shoppe

A must-stop for children after the Light Up the Night Parade, where they can buy a special gift for the special people in their life. Our Elf Shoppe is designed for children 3 and older, and our elves will assist your child in picking just the right item for every family member without breaking your Holiday budget. All the items are \$5 or less, and our special elves will even wrap items (SC).

**Location:** Sips & Sprinkles back room; 221 W. Locust St  
**Date:** Dec. 6 **Open:** 5-8 PM

## Skate with Santa

Come out to the Riverside Ice Arena and skate with Santa to some classic Christmas tunes. After skating, come into the AJ Johnson Pavilion to warm up with some hot chocolate. Participants will receive a wristband for a skate rental, access to the ice rink, a candy cane, and one hot chocolate. Skate sizes are limited (CV). **Location:** Riverside Ice Arena • **Min/Max:** 10/40 • **Register by:** December 6

Code	Age	R/NR Fee	Date	Time	Day
<u>105002-01</u>	3+	\$6/\$9	12/13	6-8 PM	FRI

## Candy Houses

Time to break out that ugly Christmas sweater to enjoy some holiday fun! Come celebrate the day and the holiday season and be jolly! Get in the holiday spirit with a fun family afternoon activity. Create your very own gingerbread house from a variety of goodies and treats. We will provide all the trimmings to make your house one of a kind! Paint your own ornament and enjoy some holiday tunes! Fee includes supplies to create one candy house per registered individual or parent/child pair. All children under 6 must be accompanied by an adult. Pre-registration is required, and walk-ins will not be accepted (CV). **Location:** Rivers Edge Recreation Center • **Min/Max:** • **Register by:** November 29

Code	Age	R/NR Fee	Date	Time	Day
<u>105056-01</u>	2-15	\$21/\$26	12/7	11 AM-12:30 PM	SAT



## Letters to Santa

Belvidere Park District will be visited by the elves to pick up your letters for Santa! Let Santa know what you want for Christmas and if you have been good this year! No postage necessary. Santa uses the United Elf Postal Service! Please make sure to include a return address so Santa can deliver your letter back to you (TK).

**Location:** Rivers Edge Rec Center  
**Mail Drop off Deadline:** 11/18-12/9 Mail Returned: 12/12-12/21



D A D D Y   D A U G H T E R

# Sweetheart DANCE

Dads or a special someone, mark your calendars for February 1st and get ready to make memories that will last a lifetime as you dance the night away with your daughter(s). This magical night will include a corsage, goodie bag, light refreshments, and of course, lots of dancing! There will be an opportunity for each couple to have their photo taken (KI). **Location:** Rivers Edge Recreation Center • **Min/Max Couples:** 25/128 • **Register by:** January 24

Code	Age	R/NR Fee	Date	Time	Day
<u>105016-01</u>	3+	\$36/\$51	2/1	6-8 PM	SAT
Additional Child:		\$18/\$26			



M O T H E R   S O N

# SUPERHERO DANCE

Moms or a special someone, it's your turn to grab your son and party the night away at the Mother Son Superhero Dance. Make lifetime memories while you enjoy music, dance contests, games, and goodies on this special night. Light refreshments are provided. Each young gentleman will receive a goodie bag. Come dressed as your favorite superhero and dance the night away. Each couple will have the opportunity to have their picture taken to remember this special evening (TK). **Location:** Rivers Edge Recreation Center • **Min/Max Couples:** 25/128 • **Register by:** February 22

Code	Age	R/NR Fee	Date	Time	Day
<u>105049-01</u>	3+	\$36/\$51	3/1	6-8 PM	SAT
Additional Child:		\$18/\$26			





# Opening Day is Friday, December 6th

## Public Skate Times

Mon-Thur: 4-7 PM • Friday: 4-9 PM  
Saturday: 12-5 PM • Sunday: 12:15-7 PM

## Figure Skate Times

Sunday: 10 AM-12 PM

\*times subject to change due to weather, special events & rentals

## Open Shoot Times

YOUTH 12 & under:

Tues: 7:45-9 PM & Thur: 7:15-9 PM\*

ADULT 13+:

Mon & Wed: 7:15-9 PM & Sat: 5-7 PM\*

\*tentative schedule - times subject to change due to weather, special events & rentals

The Riverside Ice Arena is located in Doty Park near downtown Belvidere and sits along the Kishwaukee River. It includes one NHL regulation-sized ice rink, the AJ Johnson Warming House and Ozzie's Skate Shop. The ice rink offers public skate times, open shooting, 2 warming cabins for rent and ice skating lessons for all ages. Ozzie's Skate Shop offers skate rentals and skate aids.

## Daily Admission

Adults: \$5 • Children (4-17) \$3  
(Children ages 3 years and younger are free)

Open shoot: \$6 • Skate Rental: \$5,  
Bobby Rentals \$3 with ID

## 2024-25 Season Pass

Individual: \$40 for residents,  
\$45 for non-residents  
Family of Two: \$60 for residents,  
\$65 for non-residents  
\$15 each additional household  
family member



Temperature controlled cabins  
available for rent starting at \$40/hr

For more information, please call (815) 547-9557 x201



## Ice Skating Lessons



### Tot Beginners

This class is designed to help children 6 and younger to develop the ABC's movement: Agility, Balance, Coordination. Off-ice orientation prior to the first skating class. Equipment check-proper fit and lacing of skates and appropriate attire. Skates provided (CV). **Location:** Riverside Ice Arena • **Min/Max:** 4/12

Code	Age	R/NR Fee	Date	Time	Day
<u>115002-01</u>	3-6	\$26/\$36	1/6-1/20	6:15-7 PM	MON
<u>115002-02</u>	3-6	\$26/\$36	2/3-2/17	6:15-7 PM	MON

### Beginner Skate Lessons

These lessons are for the older child who wants to learn how to skate. Skill focus will be on march and glide, backward wiggles, forward one foot glide and forward & backward edge swizzles. Skates provided (CV). **Location:** Riverside Ice Arena • **Min/Max:** 4/12

Code	Age	R/NR Fee	Date	Time	Day
<u>115003-01</u>	7-15	\$26/\$36	1/8-1/22	6:15-7 PM	WED
<u>115003-02</u>	7-15	\$26/\$36	2/5-2/19	6:15-7 PM	WED

## Join Us For These Special Skate Nights!

December 6 - Opening Night

December 13 - Skate with Santa - 6-8 PM

January 10 - Hard Rock Night - 5-9 PM

January 14 - Ice Hogs Live Practice - 6 PM

February 8 - In my Era Night - 5-9 PM



## ROCKFORD ICEHOGS LIVE PRACTICE AND MEET & GREET

January 14 - Riverside Ice Arena, starting at 6 PM\*

\*weather permitting, rain-out date January 15





# SPECIAL EVENTS

## RESERVE THE ICE ARENA FOR YOUR NEXT EVENT!

Looking for a unique and exciting venue for your next event? The Riverside Ice Arena, located in Doty Park, is the perfect spot! Whether you're planning a birthday party, corporate gathering, or community event, our spacious arena provides a fun and memorable experience for guests of all ages. For more information, please call (815) 547-9557 x 201 or email [cvillarreal@belviderepark.org](mailto:cvillarreal@belviderepark.org)



Temperature controlled cabins available for rent starting at \$40/hr

**Weekends & Weekdays (non hockey rental): \$100/hr**  
**Weekdays & Weekends (hockey rental): \$150/hr**

**NERF**  
**Birthday Parties**

Now here's a Birthday Party idea that's a blast of fun! Rent out Rivers Edge Rec Center and throw a Nerf Birthday Party. We'll set up an obstacle course and provide the ammo, you bring your own nerf guns. It will be a birthday bash long remembered. customer is responsible for providing their own party supplies like tablecloths, napkins, plates etc. Contact Carlos at [cvillarreal@belviderepark.org](mailto:cvillarreal@belviderepark.org) for more details and to make a reservation (CV)

**Time:** 90 minutes  
**Number of attendees:** 10 children  
**Location:** Rivers Edge Rec Center  
**Max Capacity:** 18 children  
**Fees:** \$130/resident; \$160/non-resident (additional participants can be added for \$10 each) Fee includes four (4) pizzas, gym for one hour, and party room for 30 minutes.



### Winter Slam Pickleball Tournament

This is a fun-filled, single day double elimination tournament for all level of players! Two players allowed per team, and you will sign up and compete with that team! Divisions will be beginner, intermediate, and advanced. Please sign up honestly for the one you are able to compete in! Champions will be crowned with bragging rights and medals! (TK) **Location:** Rivers Edge Recreation Center • **Min/Max:** 4 Teams/8 Teams • **Register by:** February 15

Code	Team Level	Age	R/NR Fee	Date	Time	Day
<a href="#">102149-01</a>	Beginner	16+	\$40/Team	2/22	9 AM-5 PM	SAT
<a href="#">102149-02</a>	Intermediate	16+	\$40/Team	2/22	9 AM-5 PM	SAT
<a href="#">102149-03</a>	Advanced	16+	\$40/Team	2/22	9 AM-5 PM	SAT

# THIRD BASE AFTER SCHOOL PROGRAM

## Where You Go Before You Go Home!

Third Base is a cooperative after-school recreation program between the Belvidere Park District and School District #100. Caring and trained staff provide a safe, healthy and fun environment for boys and girls in grades K-5. Our goal at Third Base is to encourage an environment of respect, community, fun and safety. Activities include group games, arts and crafts, homework time, and parties. The program operates until 6:00PM on full days of school. For more information, contact Katie Inman, 815-547-5711 x106 or kinman@belviderepark.org (KI)



Daily snack time • Closed when school closes due to weather • Scheduled early dismissals are included in daily fees • Care available to all District 100 elementary schools • Sites are located at each school. Exceptions: *Perry students are bussed to Lincoln. Washington students are bussed to Meehan* • All registration forms in ePACT must be completed and submitted 24 hours before a child may attend • Space is limited and registration is on a first come, first paid basis • In the event of a late pick-up after 6PM a \$15 per 15 minutes late fee will immediately apply.

## 2024-25 3rd Base Registration\*

Registration will be daily: your child must be registered for the week by Wednesday at 11:59 PM prior to the week attending. Your child must be registered and paid in advance to attend the program.

There will be no drop-ins. If school is cancelled due to weather, you will receive a credit. If needed, you will be responsible for registering and paying for any Emergency School Days. You must register by the Wednesday prior to the week of attendance for all emergency school days.

All registration forms, health history and emergency contact must be completed and submitted before a child may attend. All information will be submitted through our online system - ePACT at <https://www.epactnetwork.com/login>.

\*3rd Base is a license-exempt program. The Belvidere Park District follows the guidelines put in place by the Illinois Department of Human Services and accepts requests for childcare assistance from DCFS. Parents/Guardians are responsible for registration fees until the State of Illinois authorizes financial assistance.

Code	Location	Grade
401807-01	Meehan	K-5
401817-01	Washington (to Meehan)	K-5
401827-01	Lincoln	K-5
401837-01	Caledonia	K-5
401847-01	Seth Whitman	K-5
401867-01	Perry (to Lincoln)	K-5

## Payment Options

Payments can be made via installment billing or in person.

With the **installment billing** option, payments are automatically withdrawn weekly from the debit/credit card on file every Thursday the week before attendance.

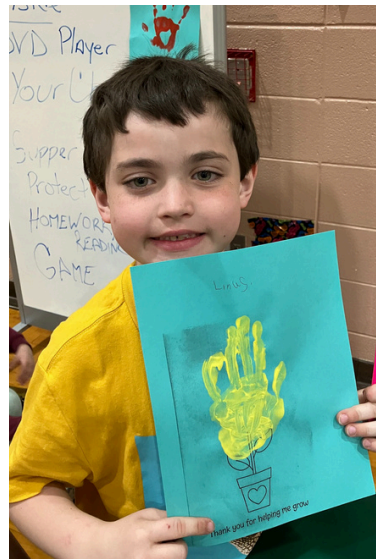
Please note, if you have 3 card declines within the current school year, you will be taken off of installment billing.

### REGISTRATION QUESTIONS?

Contact Recreation Supervisor Katie Inman  
815-547-5711 x106 | kinman@belviderepark.org

### REGISTRATION CHANGES DEADLINE

If you need to add, change or cancel dates, please email [reception@belviderepark.org](mailto:reception@belviderepark.org) by midnight the Wednesday prior to the week of attendance. No changes can be made after the deadline.



**Fees: \$17/day, 1st child;  
\$16/day, 2nd child  
same family; \$14/day  
per additional child  
from same family**





# YOUTH ATHLETICS

## Youth Basketball Skills and Drills

This is a fun and informative introduction to basketball for players of all skill levels! This program is designed for participants to learn and utilize fundamental skills of basketball and put knowledge toward game play. This is a great opportunity to learn new skills and practice previously learned ones. Participants use smaller basketballs and lowered hoops according to grade level (TK). **Location:** Meehan Gym • **Min/Max:** 7/12 • **Register by:** January 31

Code	Grades	R/NR Fee	Date	Time	Day
<a href="#">101166-01</a>	1-2	\$38/\$53	2/5-2/26	5:30-6:30 PM	WED
<a href="#">101166-02</a>	3-4	\$38/\$53	2/5-2/26	6:45-7:45 PM	WED



## Lil Pint Hoops

This program is a great start to introducing your 3-4 year old to the game of basketball. Mini basketballs and lowered baskets make this class the perfect introductory class for the future basketball player. Participants will work on dribbling, passing, shooting and listening through fun and creative games and drills. This instructional class will also include the concept of fair play and working together. Space is limited, so register early! (TK) **Location:** Meehan Gym • **Min/Max:** 6/12 • **Register by:** January 3 and January 27

Code	Age	R/NR Fee	Date	Time	Day
<a href="#">101096-01</a>	3-4	\$34/\$49	1/8-1/29	5:30-6:15 PM	WED
<a href="#">101096-02</a>	3-4	\$34/\$49	2/1-2/22	9-9:45 AM	SAT

## Small Shots Basketball

Looking for a class to introduce your 5-6 year old to basketball? You've found it! The basic skills of dribbling, passing, shooting & listening will be taught through a variety of creative drills and games that will help them improve at their own pace. Teamwork, participation, and good sportsmanship are stressed. Smaller basketballs and lowered baskets will be used to allow each child a positive successful learning experience. Space is limited so register early! (TK) **Location:** Meehan Gym • **Min/Max:** 6/12 • **Register by:** January 3

Code	Age	R/NR Fee	Date	Time	Day
<a href="#">101126-01</a>	5-6	\$38/\$53	1/8-1/29	6:30-7:30 PM	WED
<a href="#">101126-02</a>	5-6	\$38/\$53	2/1-2/22	10-11 AM	SAT







## J&J Dance at Rivers Edge



Billing for these programs will happen on 1/1, 2/1, 3/1, 4/1 & 5/1

### Creative Movement

This class serves as an introduction to dance where preliminary ballet and tap skills are taught. As our youngest athletes, these children learn how to follow directions, stand patiently in line, balance/coordination and working on counting shape identification (CV). **Shoe Requirements:** Each dancer will need PINK ballet shoes • **Additional Fees:** \$70 Costume Fee Due March 13th (billed directly by J&J Dance and Tumbling) • **Min/Max:** 4/20 • **Registration Deadline:** February 27

Code	Age	Monthly R/NR Fee	Dates	Time	Day
<u>101317-01</u>	1.5-3	\$52/\$67	1/16-5/29	5-5:30 PM	THU

### Ballet/Tap Combination

Our ballet/tap classes are offered separately for athletes ages 3.5-5 and 6-9. In these classes, instructors work to expand their students' current dance knowledge. These dancers will continue to work on following directions, to stand patiently in line and work on counting, shape identification and balance. Flexibility is a key skill worked on with the 3.5-5 year old. Athletes in this class also have the opportunity to participate in a recital hosted by J&J! (CV) **Shoe Requirements:** Each dancer will need BLACK patent leather tap shoes and PINK ballet shoes • **Additional Fees:** \$80 Costume Fee Due March 13th (billed directly by J&J Dance and Tumbling) • **Min/Max:** 4/20 • **Registration Deadline:** February 27

Code	Age	Monthly R/NR Fee	Dates	Time	Day
<u>101317-02</u>	3.5-5	\$60/\$75	1/16-5/29	5:30-6:15 PM	THU
<u>101317-03</u>	6-9	\$60/\$75	1/16-5/29	6:15-7 PM	THU



### Jazz/Hip-Hop Combination

In this class, dancers implement basic jazz technique and learn floor skills to create awesome routines. Body awareness, partner work, balance and flexibility are also main focuses. Athletes in this class also have the opportunity to participate in a recital hosted by J&J! (CV) **Shoe Requirements:** Each dancer will need BLACK slip-on Jazz shoes • **Additional Fees:** \$80 Costume Fee Due March 13th (billed directly by J&J Dance and Tumbling) • **Min/Max:** 4/20 • **Registration Deadline:** February 27

Code	Age	Monthly R/NR Fee	Dates	Time	Day
<u>101317-04</u>	6-9	\$52/\$67	1/16-5/29	7-7:30 PM	THU
<u>101317-05</u>	10-18	\$52/\$67	1/16-5/29	7:30-8 PM	THU

### Lyrical/Tap Combination

Through ballet and lyrical styles, students have a higher focus on technique, artistry, story-telling and choreography. These dancers will keep expanding their technique, foundation, ballet, flexibility, and overall awareness of how their body moves. When focusing on tap, students will work on advanced sounds, counting, rhythm and choreography. Athletes in this class also have the opportunity to participate in a recital hosted by J&J! (CV) **Shoe Requirements:** Each dancer will need BLACK tie tap shoes, and for lyrical, we dance barefoot. • **Additional Fees:** \$105 Costume Fee Due March 13th (billed directly by J&J Dance and Tumbling) • **Min/Max:** 4/20 • **Registration Deadline:** February 20

Code	Age	Monthly R/NR Fee	Dates	Time	Day
<u>101317-06</u>	10-18	\$60/\$75	1/16-5/29	8-8:45 PM	THU



## Youth Hockey Skills and Drills

Join us in this beginner level hockey skills and drills class! Learn the fundamentals and a little bit about the game in this fun class at our outdoor ice rink in Doty Park! We will work on the basic techniques for shooting, passing, and puck handling on the ice. We will also work on our skating skills with a hockey stick in hand. All participants must bring their own hockey stick. (Times and dates subject to change based on weather) (TK).

**Location:** Riverside Ice Arena • **Min/Max:** 6/12 • **Register by:** January 15

Code	Age	R/NR Fee	Date	Time	Day
<a href="#">115005-01</a>	6-8	\$27/\$37	1-21-2/11	5:30-6:30 PM	TUE
<a href="#">115005-02</a>	9-11	\$27/\$37	1-21-2/11	6:45-7:45 PM	TUE



## Nerf Wars

Gather your friends, your NERF guns and your courage for a night of games and competition at the Rivers Edge Recreation Center. The gym will be transformed into an awesome battlefield for you to defend! Nerf War has been declared! Safety and fun are the main priority! Goggles must be worn and will be provided. No need to bring your ammo; we will have plenty! If you don't have a Nerf gun, you can use one of ours. This night will be EPIC! (CV) **Location:** Rivers Edge Recreation Center • **Min/Max:** 10/40

Code	Age	R/NR Fee	Date	Time	Day	Reg Deadline
<a href="#">101211-01</a>	7-9	\$11/\$16	1/17	6-7 PM	FRI	1/10
<a href="#">101211-02</a>	10-13	\$11/\$16	1/17	7:15-8:15 PM	FRI	1/10
<a href="#">101211-03</a>	7-9	\$11/\$16	2/21	6-7 PM	FRI	2/14
<a href="#">101211-04</a>	10-13	\$11/\$16	2/21	7:15-8:15 PM	FRI	2/14

## Baseball Skills and Drills

This class is great for any level of baseball player! The main focus of this class is learning the skills of the game of baseball. We will also scrimmage to simulate game play. This class is taught by coaches from the Bison Outlaws baseball organization! All participants must have closed toed gym shoes and a baseball glove (TK).

**Location:** Rivers Edge Recreation Center • **Min/Max:** 8/20 • **Register by:** December 30



Code	Age	R/NR Fee	Date	Time	Day
<a href="#">101057-01</a>	6-8	\$40/\$55	1/4-1/25	9-10 AM	SAT
<a href="#">101057-02</a>	9-11	\$40/\$55	1/4-1/25	10:15-11:15 AM	SAT

## Little Ninjas Tae Kwon Do

This program is specifically designed to help teach 4 to 14-year-olds the important qualities of respect, self-control and confidence, while building motor skills and coordination. In addition, children will learn the importance of situational awareness. The first years are the most important, so start early and give your child the important skills to succeed throughout their lives. The Belvidere Park District does not require your child to purchase any additional equipment to participate. However, if you would like to move up in the rank/belt system, additional equipment, uniform and testing fees may apply via your instructor (TK). **Instructor:** Master Sung Sop An (8th degree black belt) and his black belt staff • **Location:** Rivers Edge Recreation Center • **Min/Max:** 5/30

Code	Age	R/NR Fee	Dates	Time	Day
<a href="#">106086-01</a>	4-14	\$42/\$57	1/7-2/4	6-6:30 PM	TUE
<a href="#">106086-02</a>	4-14	\$42/\$57	2/11-3/11	6-6:30 PM	TUE
<a href="#">106086-03</a>	4-14	\$42/\$57	3/18-4/15	6-6:30 PM	TUE
<a href="#">106086-04</a>	4-14	\$42/\$57	4/22-5/20	6-6:30 PM	TUE







## Spring Soccer Squirts

This program is designed to teach children the basics of soccer. Dribbling, passing, shooting, and listening skills will be covered through exciting games that keep everyone involved. During this instructional league, participants will develop their skills through drills and games! Participants must wear shin guards and closed toed shoes. Participants will receive a t-shirt and will also receive a medal at the end of the season. Volunteer coaches are needed for this program! (TK) **Location:** Prairie Fields • **Min/Max:** 30/60 • **Register by:** March 31

Code	Age	R/NR Fee	Date	Time	Day
<u>101226-01</u>	3-4	\$41/\$56	4/12-5/24	9-9:45 AM	SAT

## Indoor Soccer Squirts League

It may be cold outside, so let's play soccer inside! This program is designed to teach children the basics of soccer. Dribbling, passing, shooting, and listening skills will be covered through 4 weeks of game play. Games will be 45 minutes. Participants must wear shin guards and closed toed gym shoes. Each participant will receive a t-shirt. Volunteer coaches are needed for this program! (TK) **Location:** Meehan Gym • **Min/Max:** 20/40 • **Register by:** December 27

Code	Age	R/NR Fee	Date	Game Times	Day
<u>101206-01</u>	3-4	\$37/\$52	1/6-1/27	5:30 PM & 6 PM	MON
<u>101206-02</u>	5-6	\$37/\$52	2/3-2/24	5:30 PM & 6 PM	MON



## Youth Soccer League

This program is A great way to involve your child in the sport of soccer while learning the importance of teamwork! Children will participate in games with emphasis on fun, participation and learning the rules of the game. These concepts will build self-esteem and enhance muscle growth. Games will be played on a reduced size field and goals for participants age 5-7. Participants in the 8-10 age group will play on a U10 field size. Shin guards and closed toed shoes are required. All players will receive a jersey and will also receive a medal at the end of the season. Volunteer coaches are needed for this program (TK). **Location:** Prairie Fields • **Min/Max:** 40/96 • **Register by:** March 31

Code	Age	R/NR Fee	Dates	Time	Day
<u>101236-01</u>	5-7	\$52/\$66	4/12-5/24	10-11 AM	SAT
<u>101236-02</u>	8-10	\$52/\$66	4/12-5/24	10:45 AM - 1 PM	SAT



*Volunteer Coaches Needed - Contact Taylor at (815) 547-5711 x 200 for more information!*



## Kids Spot Youth Tumbling

The Belvidere Park District and Kids Spot Inc. have partnered to offer high energy tumbling programs. Kids Spot Inc. has over 20 years of coaching experience and has received numerous regional and national awards. All classes will be held at the Rivers Edge Recreation Center and taught by Kids Spot staff (TK). **Location:** Rivers Edge Recreation Center



### TINY TUMBLERS

Jump, flip, and roll! This class is perfect for the kids that just love to tumble. Tiny Tumblers focuses exclusively on the fundamentals of tumbling and classroom participation. Through a variety of fun activities, your preschooler will learn to cartwheel and roll, listen and follow directions, work independently and cooperate with others. Must be potty trained to participate. **Min/Max:** 4/12

Code	Age	R/NR Fee	Dates	Time	Day
<a href="#">106225-01</a>	3-5	\$79/\$92	1/7-1/28	4:15-5 PM	TUE
<a href="#">106225-02</a>	3-5	\$79/\$92	2/4-2/25	4:15-5 PM	TUE
<a href="#">106225-03</a>	3-5	\$79/\$92	3/4-3/25	4:15-5 PM	TUE
<a href="#">106225-04</a>	3-5	\$79/\$92	4/1-4/22	4:15-5 PM	TUE
<a href="#">106225-05</a>	3-5	\$79/\$92	4/29-5/20	4:15-5 PM	TUE



### BEGINNING TUMBLING

Our entry level tumbling class is designed to teach the basic skills and techniques needed to safely progress in this dynamic sport. Cartwheels and handstands, power and grace, this exciting class offers 45 minutes of non-stop fun and fitness!

**Min/Max:** 4/8

Code	Age	R/NR Fee	Dates	Time	Day
<a href="#">106256-01</a>	6-17	\$79/\$92	1/7-1/28	5-5:45 PM	TUE
<a href="#">106256-02</a>	6-17	\$79/\$92	2/4-2/25	5-5:45 PM	TUE
<a href="#">106256-03</a>	6-17	\$79/\$92	3/4-3/25	5-5:45 PM	TUE
<a href="#">106256-04</a>	6-17	\$79/\$92	4/1-4/22	5-5:45 PM	TUE
<a href="#">106256-05</a>	6-17	\$79/\$92	4/29-5/20	5-5:45 PM	TUE

### NOVICE TUMBLING

Mastered the basics? Novice Tumbling class will continue to challenge your tumbler with learning roundoffs, limbering skills, and handsprings. Participants must complete the Beginning Tumbling program and be referred by a coach to participate in the novice class. **Min/Max:** 4/8

Code	Age	R/NR Fee	Dates	Time	Day
<a href="#">106258-01</a>	6-17	\$79/\$92	1/7-1/28	5-5:45 PM	TUE
<a href="#">106258-02</a>	6-17	\$79/\$92	2/4-2/25	5-5:45 PM	TUE
<a href="#">106258-03</a>	6-17	\$79/\$92	3/4-3/25	5-5:45 PM	TUE
<a href="#">106258-04</a>	6-17	\$79/\$92	4/1-4/22	5-5:45 PM	TUE
<a href="#">106258-05</a>	6-17	\$79/\$92	4/29-5/20	5-5:45 PM	TUE

# YOUTH PROGRAMS

## Winter Paint Camp

Time to let creativity loose for this fun Winter Paint Camp! This class provides a creative outlet and can also help children develop their fine motor skills. They will learn about different artists, styles, and techniques and practice them during class! Each day the kids will receive an 8x10 canvas with all of the supplies for the paint (CV). **Location:** Rivers Edge Recreation Center • **Min/Max:** 8/30 • **Register by:** January 3 • **Instructor:** Tracy Nogacz

Code	Age	R/NR Fee	Date	Time
<a href="#">103033-01</a>	6-12	\$100/\$115	1/8-1/10	10-11:30 AM

## 4H Chef's Creation

Your gourmets will begin learning the basics of kitchen knowledge. They will build confidence in the kitchen with measuring, following directions and reading a recipe. They will make yummy treats to sample in class as well as bring home delicious recipes to share. A recipe book will be passed out on the last day of class, so you can easily repeat them at home (CV). **Location:** Special Recreation Facility • **Min/Max:** 6/14 • **Register by:** February 28

Code	Age	R/NR Fee	Date	Time	Day
<a href="#">103006-01</a>	5-9	\$37/\$52	3/6-3/20	5:30-7 PM	WED
<a href="#">103006-02</a>	5-9	\$37/\$52	4/3-4/17	5:30-7 PM	WED



## 4H Discovery Science

Encourage your child's curiosity and expand their understanding of the world of science. Different scientific concepts will be explored each session through a variety of hands-on activities (CV). **Location:** Rivers Edge Recreation Center • **Min/Max:** 6/14 • **Register by:** February 28

Code	Age	R/NR Fee	Date	Time	Day
<a href="#">103003-01</a>	5-7	\$26/\$31	3/5-3/19	5:15-6 PM	WED
<a href="#">103003-02</a>	8-10	\$26/\$31	3/5-3/19	6:15-7 PM	WED
<a href="#">103003-03</a>	5-7	\$26/\$31	4/2-4/16	5:15-6 PM	WED
<a href="#">103003-04</a>	8-10	\$26/\$31	4/2-4/16	6:15-7 PM	WED



## Adventure Club

Where is your sense of adventure? Come out and join us for this non-typical sports class. We will be trying new sports/activities that you wouldn't normally be exposed to, like rock climbing, disc golf, team building just to name a few. We may even invent our own new fun sport or game. The skies are the limit! Class will be indoors and outdoors so dress accordingly (CV). **Location:** Rivers Edge Recreation Center • **Min/Max:** 5/12 • **Register by:** April 4

Code	Age	R/NR Fee	Date	Time	Day
<a href="#">101212-01</a>	7-9	\$31/\$46	4/9-5/7	5-6 PM	WED
<a href="#">101212-02</a>	10-13	\$31/\$46	4/9-5/7	6:15-7:15 PM	WED





PCF's group adult fitness classes are designed to suit your lifestyle and level of fitness. Classes are structured to enhance your everyday activities and will strengthen your upper and lower body via exercises for cardio, back, core, arms and legs. They'll help you choose the right program whether it's advanced or beginner (low impact), with a variety of times to fit your schedule. Plus, there's a Cardio Kick-Boxing class on Thursdays when you want to "kick it " up a notch. Participants can attend any/all classes of their choice.

ALL CLASSES ARE HELD AT RIVERS EDGE RECREATION CENTER and are 45-60 minutes long. They include warm-up, workout and stretching. Registration only at Rivers Edge Rec Center.



**EDA Classes** - Classes are structured to enhance everyday activities for all fitness levels. Modifications are made for injuries and fitness levels. Learn how to strengthen your body from upper to lower. This includes cardio, back, core, arms, and legs. Classes are 45-60 minutes long and include warm up, workout, and stretching (TK).

**Code:** 102173-01 • **Classes are:** MON-THU at 5AM, 12PM & 5PM, FRI at 12PM, SAT at 8AM. Thursdays at 5PM are cardio kickboxing • **FEE:** \$80/month; will be auto deducted at the first of every month; \$55/month college students • **Dates:** 1/2-5/31 • **Instructor:** Crystal Soltow

**Low Impact Classes** - Low impact for all fitness levels. There are no burpees and no push ups in this class. Classes include warm up, workout, and stretching. Low impact cardio, core and strength. Modifications are made for injuries and fitness levels. This class is for everyone! (TK). **Code:** 102173-02 • **Classes are:** MON/WED/THU, 6:15AM and 4:15PM. • **FEE:** \$45/month; will be auto deducted at the first of every month • **Dates:** 1/2-5/31 • **Instructor:** Cindy Poulter



## ADULT CO-ED VOLLEYBALL

Join us for a co-ed recreational volleyball league. This is a 14 week season that will include a tournament at the end of the season! All games are officiated. Teams may consist of 6-10 players. Winners will receive their choice of a t-shirt or \$50 off their next season (TK).

**Location:** Rivers Edge Recreation Center • **Min/Max:** 4 teams/8 teams • **Registration Deadline:** December 30

Code	Age	R/NR Fee	Date	Time	Day
102100-01	18+	\$375/team	1/6-4/7	6:15-10 PM	MON





## VALENTINES PAINT NIGHT

Celebrate Valentines Day with a fun themed paint night! Paint nights are perfect for individuals, families, and friends looking to let their creativity flow through art! We will be painting on an 8x10 canvas that is Valentines Day themed! Paint supplies and the canvas are supplied for the evening! (CV) **Location:** Rivers Edge Recreation Center • **Min/Max:** 10/20 • **Registration Deadline:** January 31



Code	Age	R/NR Fee	Date	Time	Day
<u>103036-01</u>	18+	\$50/\$65	2/7	6-8 PM	FRI

**UNPLUG WITH GENTLE YOGA**

Classes range from extra gentle to advanced levels and are open to ages 16 and up with both beginning students and those with experience in yoga. Each student is encouraged to work at their own pace. Each class utilizes basic postures to build strength, stamina, and increase flexibility while improving balance and concentration. The class explores the relationship of mind, breath, and body. Each class ends with a guided deep relaxation exercise that releases mental and physical tensions held deep within, resulting in a sense of well-being, and peace while feeling grounded, balanced, lighter, younger, and centered (TK). **Location:** Rivers Edge Recreation Center • **Min/Max:** 7/20 • **Instructor:** Jeff Leach

## BEGINNER YOGA

Code	Age	R/NR Fee	Dates	Time	Day
<u>106316-01</u>	16+	\$88	1/9-2/20	5:15-6:30 PM	THU
<u>106316-02</u>	16+	\$88	2/27-4/10	5:15-6:30 PM	THU
<u>106316-03</u>	16+	\$88	4/17-5/29	5:15-6:30 PM	THU

## INTERMEDIATE/ADVANCED YOGA

Code	Age	R/NR Fee	Dates	Time	Day
<u>106306-01</u>	16+	\$88	1/7-2/18	5:15-6:30 PM	TUE
<u>106306-02</u>	16+	\$88	2/25-4/8	5:15-6:30 PM	TUE
<u>106306-03</u>	16+	\$88	4/15-5/27	5:15-6:30 PM	TUE





# CLUB HORIZON

## 2024-25 SCHOOL YEAR

Club Horizon provides your child with reliable care after school, while participating in games, crafts, snacks, and active play. The program is based on the District #100 school calendar/schedule and will NOT BE HELD on the following dates: 11/5, 11/11, 11/27 – 11/29, 12/3 – 1/3, 1/20, 2/14, 2/17, 3/24 – 3/28, 4/18, and 5/26. All participants must complete personal emergency information through ePACT prior to the first day of attendance. Parent/guardian will automatically receive an email after registering for the first time of the school year (SC).

**Min/Max:** 8/20 • **Location:** Special Recreation Facility • **Transportation:** NONE; you MUST pre-arrange transportation from the school to our facility prior to attending. • **Register by:** Wednesday at 11:59 PM prior to week of attendance. **If you need to add, change, or cancel dates – please email [specrecregistration@belviderepark.org](mailto:specrecregistration@belviderepark.org) by 11:59 on the Wednesday prior to the week of attendance. No changes can be made after this deadline.**

**Payment Options:** Payments can be made via installment billing or in person. With the installment billing option, payments are automatically withdrawn weekly from the debit/credit card on file every Thursday the week before attendance. Please note, if you have 3 card declines within the current school year, you will be taken off of installment billing.



*\*Discount available for multiple children; including those attending 3rd Base. Early dismissals are included in the fee.*

Code	Ages	R/NR Fee	Times	Dates	Days
<a href="#">309747-01</a>	5-21	\$17/day*	Afterschool - 6 PM	2024/2025 District #100 School Year	M-F

### Spring Break Camp

It's spring break and we have come to PARTY!!! Each day, campers will enjoy games, crafts, and other themed activities from birthday, costume, tea, dance, and luau parties. Campers must bring a sack lunch and drink each day; an afternoon snack will be provided. Camper emergency information must be completed through ePACT prior to attendance. Parent/guardian will automatically receive an email after registering. There is no daily option for Spring Break Camp (SC).

**Min/Max:** 6/12 • **Location:** Special Recreation Facility • **Transportation:** NONE  
 • **Register by:** March 19

Code	Age	Fee	Date	Time
<a href="#">109707-01</a>	5-21	\$175	3/24-3/28	7 AM-6 PM

# »»» CAMP HORIZON «««

While Winter may be around the corner, it's already time to think about next summer! In 2025, Camp Horizon will go "Full STEAM Ahead!". Outer space, sports, weather events, and more will be explored - each week will feature a new theme for campers to enjoy activities using Science, Technology, Engineering, Art, and Math! Registration information will be in the Summer Go Guide, and ePACT will be used for camper information. If you are new to Camp Horizon, please contact Sean Cramer for more information and to schedule an intake assessment (SC).

# HUG AN ATHLETE 5K

Join us for the 12th annual 5K walk/run/roll where individuals of all abilities will have the opportunity to participate in this great event for an even greater cause! All proceeds from the "Hug An Athlete" 5K benefit the Belvidere Park District Pirate Athletes. Funds raised from this event are used specifically to assist athletes with registration fees through scholarships, the purchase of uniforms & equipment, banquet attendance, and to offer athletes a variety of Special Olympics opportunities and experiences similar to their typical peers.



## Be a Hugger

The 12th Annual "Hug an Athlete" 5K is here and we need your help! A hugger's job is just that, to give hugs (handshakes & high fives too!) to the runners, walkers, and rollers that cross the finish line. Giving hugs is not only a special treat for the runners, but also allows 5K participants to see the athletes they are raising money to support. So come out, give a hug, and drink some hot cocoa (GR). **Location:** Doty Park • **Transportation:** NONE - Meet at Doty Park Pavilion • **Register By:** February 3 for a shirt, February 21 for no shirt

**SUNDAY, FEB. 23  
1PM AT DOTY PARK**

**REGISTRATION IS OPEN!**

Visit [huganathlete5k.org](http://huganathlete5k.org)  
for more information!

### Register Early and Save!

11/29-2/3	\$30	Shirt & Swag Bag Guaranteed
2/4-2/20	\$35	Swag Bag Guaranteed
2/21-2/23	\$40	Race Day Registration

Code	Age	Fee	Dates	Time	Day
<a href="#">109103-02</a>	8+	\$15 with shirt	2/23	11:45 am-3 pm	SUN
<a href="#">109103-03</a>	8+	FREE/no shirt	2/23	11:45 am-3 pm	SUN



### ASK ABOUT OUR INCLUSION SERVICES

We invite people of all ages with disabilities to participate in programs noted throughout this Go Guide. Our Special Recreation team will work, within reasonable accommodation, to assist any resident who would like to participate. When registering, please indicate your specific needs. Once registered, and with 2 weeks advance notice, you will be contacted by Special Recreation staff to conduct a participant intake assessment to determine placement needs or accommodations. If you have any questions regarding Inclusion Services, please contact Katie Humphrey at 547-5711 x600 or at [khumphrey@belviderepark.org](mailto:khumphrey@belviderepark.org).





# SPECIAL RECREATION- NEW HORIZON

# NEW HORIZONS ADULT DAY PROGRAM

This program is designed to help participants become more independent in daily leisure life skills. Participants can be newly out of high school or older. Activities include weekly community outings, basic cooking skills, nutrition, exercise, laundry development, gardening, multi-step crafts, and other leisure life skills activities. New Horizons is staffed at a 1:6 staff to participant ratio and has specific eligibility requirements to participate. If you have questions or would like more information, contact Sean Cramer at [scramer@belviderepark.org](mailto:scramer@belviderepark.org) or 815-547-5711 ext. 601 (SC). **New Horizons WILL NOT meet during the following dates in 2025:** 4/18, 5/26-5/30, 6/19, 7/4, 8/11-8/15, 9/01, 11/11, 11/27, 11/28, 12/22-01/05



## Option 1: Attend Wednesdays & Fridays

Code	**Fee	EFT	Payment 1 due	Additional Payment Due	Days	Dates	Time
<u>909400-01</u>	\$4,020	12 equal payments of \$335	1/2/2025*	1st day of each month	Wednesday & Friday	1/8-12/19	9 AM-4 PM

## Option 2: Attend Tuesdays & Thursdays

Code	**Fee	EFT	Payment 1 due	Additional Payment Due	Days	Dates	Time
<u>909401-01</u>	\$4,020	12 equal payments of \$335	1/2/2025*	1st day of each month	Tuesday & Thursday	1/7-12/18	9 AM-4 PM

Registration for 2025 will open on December 11, 2024, after the Mandatory Parent Meeting. No payments will be processed until January 2, 2025 - regardless of payment option. Program fee includes, but is not limited to, daily lunch, daily themed snacks, craft supplies, leisure magazine subscriptions, Special Olympics/sports instruction, gardening activities, swimming (in the summer), special in-house events, 1 short-sleeved t-shirt, 1 long-sleeved t-shirt, 1:6 staff/participant ratio, program space, and transportation to/from community activities. Activity calendars, lunch menus and snack menus will be issued one time per month via email.

\*A discount of 3% will be issued if choosing to pay entire balance in full.



## HOW DO YOU REGISTER FOR NEW HORIZONS?

- New participants must contact Sean Cramer to complete an eligibility assessment. If participant meets eligibility requirements, then must complete registration packet.
- Current participants will receive registration packet before winter break. Packets will be available at the parent meeting.
- Families **MUST** attend the annual parent meeting on Wednesday, December 11, 2024, from 5:30 PM – 7:00 PM. They will have the opportunity to complete the registration packet, go over the parent/participant handbook, and hear information pertinent to the program for 2025.
- Register for the 2025 program year.

## Weekly Community Outings

### (only open to current New Horizons participants)

Register for any or all of the Community Outings as you wish! Both groups will have the ability to participate 3 days per week (if desired) with this option. Community Outings will occur typically on Monday throughout 2025, but depending on activity, they may be offered on a different day. If alternate trip day occurs, participants will make up their program day on Monday for that week. The trip locations will be distributed to New Horizons families quarterly, with the first quarter distributed to families December 2024. Choose which trips you would like to attend and see some of your Grizzly pals from both groups on the trips.

### Registration Information:

**Fee:** \$47.00 per outing (lunch is included in the fee)

**Time:** 9:00 AM – 4:00 PM

**Location:** Varies and will Depart/Return from/to the Special Recreation Facility

**Staff Contact:** Sean Cramer



# NEW HORIZONS PARENT MEETING

The annual mandatory New Horizons parent/guardian meeting will be held in person **Wednesday, December 11, 2024 from 5:30-7pm** at the Special Recreation Facility. Yearly paperwork and updated information will be distributed at this time. The meeting is a yearly requirement for participants who attend New Horizons. Participants **MUST** have at least one parent/guardian present at this meeting.





# SPECIAL RECREATION-SPECIAL EVENTS

## Paramount Theatre: Waitress

What is more American than apple pie? A small-town waitress with a dream and the ingredients for success! Join us as we head to brunch at IHOP and then to the Paramount Theatre to watch Waitress! (GR) **Min/Max:** 6/12 • **Location:** Paramount Theatre, Aurora • **Transportation:** Depart/Return Special Recreation Facility • **Register by:** February 4



Code	Age	Fee	Date	Time	Day
<u>109204-01</u>	16+	\$75	2/16	8:30 AM-5:00 PM	SUN

## Special Rec Theatre Co.

Come join us for our production of Grease! We will be rehearsing our lines once a week in preparation for the show. Got stage fright? No problem! We need a backstage crew to help with costumes, backgrounds, set up, and more! Theater performance will be on Friday, May 16th, at the Special Recreation Facility (GR). **Min/Max:** 8/10 • **Location:** Special Recreation Facility • **Transportation:** NONE

Code	Age	Fee	Dates	Time	Day	Register By:
<u>109415-01</u>	8+	\$85	2/19-4/23	6-8 PM	WED	3/5



## Sweetheart Dance

Join us for a sweet evening of dancing to our favorite tunes, socializing with friends, and a pizza dinner! Guests will receive a flower, a polaroid picture and a craft (GR). **Min/Max:** 6/12 • **Location:** Special Recreation Facility • **Transportation:** NONE • **Register by:** February 3

Code	Age	Fee	Date	Time	Day
<u>109200-01</u>	12+	\$25	2/7	6-8 PM	FRI

## New Horizons Rummage Sale

Mark your calendars for the New Horizons Rummage Sales in 2025: Our Spring sale is May 1-2, and the Fall sale is September 4-5. New Horizons participants sort, price, sell, and even negotiate prices during the sale to develop a variety of important skills. All proceeds help offset activities and materials needed for the program. Donations of new and gently used items for the sale are very much needed and will be accepted beginning in April and August for each corresponding sale. All donation drop-offs must be scheduled in advance. Please contact Sean Cramer 815-547-5711 x601 or [scramer@belviderepark.org](mailto:scramer@belviderepark.org) with questions or donations. DROP OFFS WILL NOT BE ACCEPTED WITHOUT AN APPOINTMENT – please do not leave unattended donations in the lobby (SC).



# SPECIAL RECREATION-SPECIAL OLYMPICS



## SO Bocce

Join us for the Italian sport of Bocce. Athletes can compete in singles or doubles. Doubles teams will be decided on the first night of practice. The Region A tournament will be tentatively scheduled for April 26th in Dekalb. In the event of inclement weather, practices will be held indoors at the Special Recreation Facility (GR). **Min/Max:** 6/20 • **Location:** Rivers Edge Recreation Center • **Transportation:** NONE; provide to/from games & tournament • **Register by:** February 24

Code	Age	Fee	Date	Time	Day
<u>109508-01</u>	8+	\$65	3/3-4/21	5-6 PM	MON

\*The fee for participating in Special Olympics Track & Field and Bocce is charged by the Belvidere Park District to help offset the expenses related to running the programs. Special Olympics Illinois does not charge athletes to participate in competitions.

## SO Track & Field

Lace up those shoes and join us for track & field. Athletes & coaches will determine which events an athlete will excel in and train for Spring Games. The tournament will be held on Saturday, May 3, at Harlem High School. Athletes who receive a gold medal at Spring Games advance to the State Competition at ISU during June (GR). **Min/Max:** 10/30 • **Location:** Rivers Edge Recreation Center • **Transportation:** NONE • **Register by:** March 4

Code	Age	Fee	Date	Time	Day
<u>109505-01</u>	8+	\$65	3/11-4/29	6-7:30 PM	FRI

## Polar Plunge 2025

Take the Plunge with the Pirates! This year we will be forming a team of plungers! Friends, athletes, and family are all welcome to participate! Everyone will be responsible for raising their own funds - a minimum \$100 per participant. The program fee includes a team t-shirt. More Plunge specifics to come! (GR) **Min/Max:** 5/20 • **Location:** Rivers Edge Recreation Center • **Transportation:** Depart/Return Special Recreation Facility • **Register by:** February 17

Code	Age	Fee	Date	Time	Day
<u>109530-01</u>	8+	\$18	3/1	10 AM - 2 PM	SAT





# SPECIAL RECREATION - PROGRAMS

## Floral Creations

Join us to learn and explore how to create your own floral bouquets or floral centerpieces! (GR) **Min/Max:** 4/10 • **Location:** Special Recreation Facility • **Transportation:** NONE

Code	Age	Fee	Dates	Time	Day	Register by
<a href="#">109334-01</a>	8+	\$25	1/13	6-7 PM	MON	1/6
<a href="#">109334-02</a>	8+	\$25	2/10	6-7 PM	MON	2/3
<a href="#">109334-03</a>	8+	\$25	3/3	6-7 PM	MON	2/24
<a href="#">109334-04</a>	8+	\$25	4/7	6-7 PM	MON	4/1



## Mani Mondays

Join us for a fabulous girl's night in! We will be doing our nails and enjoying some light snacks & a sparkling cider fauxmosa! (GR) **Min/Max:** 4/10 • **Location:** Special Recreation Facility • **Transportation:** NONE

Code	Age	Fee	Dates	Time	Day	Register by
<a href="#">109337-01</a>	15+	\$25	1/27	6-7:30 PM	MON	1/16
<a href="#">109337-02</a>	15+	\$25	2/24	6-7:30 PM	MON	2/6
<a href="#">109337-03</a>	15+	\$25	3/24	6-7:30 PM	MON	3/17
<a href="#">109337-04</a>	15+	\$25	4/21	6-7:30 PM	MON	4/3



## Pajama Bingo

Put on your most comfortable clothes or pajamas and head over to the Special Recreation Facility! Enjoy an epic evening of bingo and prizes with your friends (GR). **Min/Max:** 6/12 • **Location:** Special Recreation Facility • **Transportation:** NONE

Code	Age	Fee	Dates	Time	Day	Register by
<a href="#">109318-01</a>	12+	\$15	1/24	6-7:30 PM	FRI	1/17
<a href="#">109318-04</a>	12+	\$15	4/25	6-7:30 PM	FRI	4/18



## Diners' Club

Take a break from those ordinary home cooked meals and get out and see what the Boone County and Rockford area has to offer! We'll visit some great restaurants, taste fabulous food, and socialize with friends. Transportation & staff are included in the fee. \*Please bring money for meal, drink, tax, and tip. Times are approximate and subject to change based on the speediness of service (GR). **Min/Max:** 6/10 • **Transportation:** Depart/Return Special Recreation Facility.



Code	Restaurant	Age	Fee	Dates	Time	Day	Register by
<a href="#">109411-01</a>	Tom & Jerry's	15+	\$20	1/9	6-8 PM	THU	1/2
<a href="#">109411-02</a>	Coaches Corner	15+	\$20	2/6	6-8 PM	THU	1/30
<a href="#">109411-03</a>	Applebees	15+	\$20	3/6	6-8 PM	THU	2/27
<a href="#">109411-04</a>	Buffalo Wild Wings	15+	\$20	4/3	6-8 PM	THU	3/27





## 2 Thumbs Up

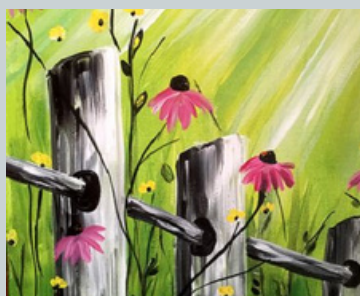
Join your friends as you catch the latest movie, while reclining in heated seats at Classic Cinemas. Movies will not be rated higher than PG-13. Fee includes door-to-door transportation (Belvidere Township residents only with a pick-up point at Candlewick's West Gate), staff supervision, ticket, and small popcorn & drink. Movie and pick up/drop off time will be emailed on the Tuesday before each movie date. Times are approximate and subject to change based on theater movie times and availability (GR). **Min/Max:** 6/10 • **Location:** Classic Cinemas, Beloit WI • **Transportation:** Door-To-Door

Code	Age	Fee	Dates	Time	Day	Register by
<a href="#">109412-01</a>	15+	\$38	1/23	5-10 PM	THU	1/16
<a href="#">109412-02</a>	15+	\$38	2/13	5-10 PM	THU	2/6
<a href="#">109412-03</a>	15+	\$38	3/13	5-10 PM	THU	3/6
<a href="#">109412-04</a>	15+	\$38	4/10	5-10 PM	THU	4/3

## Canvas & Cola

Are you interested in creating a beautiful work of art, but looking for some guidance? Canvas & Cola gives step-by-step instructions to create a beautiful painting. Enjoy light snacks and drink of choice while creating your masterpiece (GR). **Min/Max:** 4/12 • **Location:** Special Recreation Facility • **Transportation:** NONE

Code	Painting Titles	Age	Fee	Dates	Time	Day	Register by
<a href="#">109311-01</a>	Sparkler	12+	\$25	1/17	6-8 PM	FRI	1/10
<a href="#">109311-02</a>	Flamingos	12+	\$25	2/21	6-8 PM	FRI	2/14
<a href="#">109311-03</a>	Spring Flowers	12+	\$25	3/21	6-8 PM	FRI	3/14
<a href="#">109311-04</a>	Waterfall	12+	\$25	4/11	6-8 PM	FRI	4/4



## Wilderness Overnight

Splash away the winter blues with an overnight trip to the Wisconsin Dells! Come and join your friends as we take on the water park by day and enjoy movies & games at night in the comfort of our Lakeside Villa. Waterpark admission, resort fees, transportation, staff supervision, and meals are included in the fee. Please bring spending money if you wish to purchase souvenirs. A packing list will be sent one week prior to the trip. No online registration is available for this program. Please see the website for Overnight Trip Guidelines (GR). **Min/Max:** 6/12 • **Location:** Special Recreation Facility • **Transportation:** Depart/Return Special Recreation Facility • **Register by:** February 16

Code	Age	Fee	Date	Time
<a href="#">109123-01</a>	15+	\$250	3/9-3/10	9 AM-4 PM





# SPECIAL RECREATION - TRIPS

## Pottery Lounge & Lunch

Join us for a morning of painting and lunch! We will be heading to Pottery Barn to paint our own ceramic pieces. We will end the day with lunch at Chick-fil-A! (GR) **Min/Max:** 6/10 • **Location:** Rockford, IL • **Transportation:** Depart/Return Special Recreation Facility • **Register By:** January 8

Code	Age	Fee	Date	Time	Day
<u>109403-01</u>	18+	\$50	1/15	11 AM-2 PM	WED



## Nicholas Conservatory & Lunch

Come along with us as we head to the Nicholas Conservatory to see the beautiful butterfly exhibit. We will walk through the conservatory and see all the variety of plants. We will end our day with lunch at Prarie St. Brewing company. (GR) **Min/Max:** 6/10 • **Location:** Rockford, IL • **Transportation:** Depart/Return Special Recreation Facility • **Register By:** March 19

Code	Age	Fee	Date	Time	Day
<u>109403-02</u>	18+	\$65	3/26	9 AM-4 PM	WED

## Hollywood Palms Cinema & Shopping

Let's head to the movies! Come with us to watch a movie and have lunch at Hollywood Palms Movie Theater. After the movie and lunch, we will be heading to the Fox Valley Mall for some shopping! (GR) **Min/Max:** 6/10 • **Location:** Naperville, IL • **Transportation:** Depart/Return Special Recreation Facility • **Register By:** April 9

Code	Age	Fee	Date	Time	Day
<u>109403-03</u>	18+	\$55	4/16	9 AM-4 PM	WED



### NORTHLANDS ASSOCIATION FOR SPECIAL RECREATION

Northlands Association for Special Recreation (NASR) is a cooperative partnership between the Belvidere, Freeport, and Rockford Park Districts (referred to as member district).

NASR programs are open to any individual with disability-related special needs such as physical, mental and developmental disabilities and persons with mental illness, behavior disorders and visual or hearing impairments.

Member district residents are invited to participate in specialty/therapeutic (TR) programs offered through any member district at the resident rate. For participation in Inclusion Services at a member district other than your own member district, you must pay the non-resident rate for that specific program.

## NASR's Got Talent

Calling all dancers, singers, actors, comedians, magicians, & anyone who's got talent! Participate in NASR's Got Talent show for prizes, awards, and a chance to be a star. All performers will be able to step out on the stage and show NASR families what they have. No talent will be forgotten, and all talents will be accepted! Performers will be contacted with additional information about their performance and a dress rehearsal on 5/12. All talents are limited to 5 minutes (KH). **Min/Max:** 1/10 • **Location:** Sinnissippi Music Shell • **Register by:** April 28

Code	Age	Fee	Date	Time	Day
<u>109030-01</u>	15+	\$10	5/17	1-5 PM	SAT



#### Belvidere Park District

Special Recreation Department  
www.belviderepark.org  
815-547-5711

#### Freeport Park District

Special Recreation Department  
www.freeportparkdistrict.org  
815-235-6114

#### Rockford Park District

Therapeutic Recreation Department  
www.rockfordparkdistrict.org  
815-987-8800

## Public Park Amenities by Location

	ACRES	SHELTER	BASEBALL	BASEBALL	TENNIS	PICKLEBALL	HORSESHOE	BOCCE BALL	SOCCER	VOLLEYBALL	PLAYGROUND	SOFTBALL	SOFTBALL	RESTROOMS	PATHS	RECREATION SPACE
<b>ABERDEEN PARK</b>	9.4	1	1	1	2		3		1	1	1			1	X	
<b>BELVIDERE PARK</b>	55.2	5	3	1	3	6				1	4			2	X	
<b>BOB'S PARK</b>	1.2	1									1					
<b>BURGESS STREET BOAT LAUNCH</b>	1.32															
<b>DOTY PARK</b>	9.8	1									2			1	X	X
<b>FRIDH PARK</b>	27.6	1	1	1			3		1	1	1			1	X	X
<b>GLENN GREEN PARK</b>	71															
<b>SUNDSTRAND PARK</b>	15.5	3		2						4				3		
<b>HARKLESS PARK</b>	6.3			1							1				X	
<b>PRAIRIE FIELDS SPORTS PARK</b>	82.3	2	1	2					6		2	2	6	1	X	X
<b>RED HORSE BEND PARK</b>	20															
<b>RIVER'S EDGE REC. CENTER</b>	11.8							1						1		
<b>TOT LOT</b>	0.04										1					
<b>WINTERROTH PARK</b>	6.7								1		1					

**Aberdeen Park** • 1343 Orth Road, Caledonia  
**Belvidere Park** • 1006 West Lincoln Avenue  
**Bob's Park** • 524 East Locust Street  
**Burgess Street Boat Launch** • 111 Burgess Street  
**Doty Park** • 365 West Locust Street  
**Fridh Park** • 1420 9th Street  
**Glenn Green Open Space** • 8484 Distillery Road

**Harkless Park** • 918 West 9th Street  
**Prairie Fields Sports Park** • 1111 Fairgrounds Road  
**Rivers Edge Recreation Center** • 1151 W. Locust Street  
**Red Horse Bend Canoe Launch** • 6301 Lawrenceville Rd  
**Sundstrand Park** • 2100 Newburg Road  
**Tot Lot** • 1022 East Avenue  
**Winterroth Park** • 2143 East 6th Street







1151 W. Locust St.,  
Belvidere, IL 61008  
(815) 547-9557

Registration hours:  
Monday-Friday, 9AM-5 PM

## Open Pickleball

Monday-Friday 9 AM-12 PM & Friday nights 7-9 PM - **Drop-In Fee: \$4**  
Purchase a Pickleball Pass good for one year from the date of purchase.  
**Pass Fee: \$75**

## Open Volleyball

Thursdays 7-9:15PM - **Drop-In Fee: \$4**

## Indoor Batting Cage

Need to get a few swings in before the big game or secure a regular time in the off-season? Reserve your dates and times now for your baseball or softball team. Reservations are on a first-come first-paid basis. Reservations must be made for a 1-hour minimum. For more details, call the Rivers Edge Recreation Center at (815) 547-9557. **Fee: \$50 per hour**

## Climbing Wall

Drop in Monday-Thursday 5-8PM **Drop-in fees:** \$4/15 minutes; \$15 daily unlimited climb.

**Rental fee:** \$75/hour for residents, \$90/hour for non-residents; accommodates up to 30 people.

**A safety waiver must be completed prior to participating in any drop-in activity. A parent/guardian must be present to complete the form for anyone under 18.**

## Room & Gymnasium Rentals

If you need a room or gym space for your special occasion, look no further than the Rivers Edge Recreation Center. We have 4 different multi-purpose rooms, a service kitchen and an air-conditioned gymnasium. Each multi-purpose room holds a maximum of 42 people or combine two rooms for 90 people. Tables and chairs are provided. For more information to rent for your special day, call (815) 547-9557. Renters are asked to wipe down chairs, tables, and counters after use. Please put all garbage in cans, sweep floors, and remove decorations unless a set-up/take-down fee is paid. Thank you, in advance, for your help to keep our facilities clean and neat.

\*Set Up / Take Down Fee – (\$25.00) Staff will set up tables and chairs. Renter must still place all garbage in cans and remove all decorations. Staff will clean and store tables and chairs, sweep, mop the floors and empty garbage cans.

Room	Capacity	R/NR Fee Per Hour	*Set-up/ Take down fee
Upstairs Room A	42	\$40/\$55	\$25
Upstairs Room B	42	\$40/\$55	\$25
Upstairs Rooms A&B Combined	90	\$75/\$90	\$25
Downstairs Room A (With Serving Area)	42	\$50/\$65	\$25
Downstairs Room B	42	\$40/\$55	\$25
Downstairs Rooms A&B Combined	90	\$75/\$90	\$25
Half Gym		\$50/\$65	
Full Gym		\$80/\$95	

## Outdoor Bocce Courts

Bocce courts located at the Rivers Edge Rec. Center. Both courts are ADA-accessible. Bocce sets are available to rent for \$5 per use with valid ID. Please call ahead for availability at (815) 547-9557.





## Shelter Rentals

*Shelter reservations open up February 1, 2025 and Shelters can be occupied from April 1 through October 31.*

- Aberdeen Shelter:** capacity 100; 1343 Orth Road
- Bloom Shelter:** capacity 30; Belvidere Park, 1006 W. Lincoln Ave.
- Cottonwood Shelter:** capacity 100; Belvidere Park, 1001 W. Locust St.
- Doty Shelter:** capacity 60; Doty Park, 365 W. Locust St.
- Fridh Shelter:** capacity 100; Fridh Park, 1420 9th St.
- Kiddieland Shelter:** capacity 100; Belvidere Park, 1006 W. Lincoln Ave.
- Prairie Fields Shelter/Green:** capacity 150; 1111 Fairgrounds Rd.
- Prairie Fields Shelter/Red:** capacity 150; 1111 Fairgrounds Rd.
- Whispering Pines Shelter:** capacity 100; 1006 W Lincoln Ave.
- Sugar Maple Shelter:** capacity 100; 1006 Lincoln Ave.



## Sundstrand Park Shelter Rentals

Sundstrand Park • 2100 Newburg Road

- North:** capacity 100
- South:** capacity 150
- West:** capacity 250

*All shelter rentals require a minimum of 72-hour notice, subject to availability.*



## Future of Aquatics at the Belvidere Township Park District

Exciting developments are underway at Belvidere Township Park District as we embark on a journey to redefine aquatics for our community. We have conducted comprehensive aquatics market research to better understand the community's needs and desires, resulting in conceptual designs to present to the community. This will guide us in developing a plan for a future of aquatics within the township that aligns with our long-term vision and goals.

We will update the process on our website. Your input is crucial, and together we'll shape the future of aquatics at Belvidere Township Park District. Get ready to dive into planning what comes next.





# PRAIRIE FIELDS/ BALTIC MILL

Prairie Fields Sports Park features a wide array of sports fields within one park and is located on 90 acres of land south of the Boone County Fairgrounds. This innovative space provides a wide variety of amenities for families, community groups, seniors and sports teams of all ages and interests. Prairie Fields welcomes adults and children to participate in their favorite outdoor activities in a beautiful park setting.



Field	Fee
Soccer Fields #1 - #6	\$50 for 2 hours
Soccer Field #7	FREE: first come, first reserved
Softball Field	\$50 for 2 hours
Baseball Field	\$50 for 2 hours
Sundstrand Softball Field	\$50 for 2 hours

## Prairie Fields Field Rentals

The Prairie Fields Sports Park houses three full-size, one U9, one U10, and one U12 soccer fields, one baseball and one softball field to rent for your team or organization. Field reservations can be made at the Rivers Edge Recreation Center located at 1151 W. Locust Street, Belvidere, IL. Fields are reserved on a first-come, first-paid basis. Depending on weather conditions, fields will typically be available to rent from April until mid-November. There is also one FREE practice soccer field (#7) available for public use on a first-come, first-serve basis. For more information, call (815) 547-9557 x201 (CV)

## Baltic Mill

Owned and operated by the Belvidere Park District, the Baltic Mill event space is perfect for your unique outdoor celebration. The beauty of nature will surround you during the months of May through October in a relaxing natural fashion as the symphony of flowers and calming green beds provide the perfect backdrop for your outdoor wedding. The tranquil flow of the Mill Race will soothe and delight your senses. Have your memorable wedding ceremony performed on the Baltic Mill stage. The seating area features natural limestone rock for hillside seating. The Baltic Mill Conference Room provides a comfortable meeting space or preparation room for your special day. Complimentary guest parking is available throughout Belvidere Park and on Lincoln Avenue. Call 815-547-5711 x201 for full details. (CV)



The Baltic Mill, built in 1845, is rich with history and remains a cornerstone of the Belvidere Park District. Renovated and modernized, it remains beautiful, rustic and quaintly nestled among trees, the river, beautiful greenery and nature itself. Call Carlos Villarreal at 815-547-5711 x201 or email [cvillarreal@belviderepark.org](mailto:cvillarreal@belviderepark.org) for rental information and rates.

## Board Meetings

Board meetings are held the second and fourth Tuesdays of the month at 5:00 PM. at the Baltic Mill Annex in Belvidere Park - 920 W. Lincoln Ave. \*Only one meeting held in December due to the holiday season

## Park Hours

Park property hours are 6:00 AM to 10:00 PM unless a Park District-sponsored program is taking place.

## Behavior Management Policy

All participants are expected to exhibit appropriate behavior at all times.

The following guidelines have been developed to help make children's programs safe and enjoyable for all participants. Additional rules may be developed for specific programs as deemed necessary by staff. The Park District insists that all participants comply with a basic behavior code. All participants shall

- Show respect to all participants, staff, and volunteers. Participants should follow program rules and take direction from staff.
- Refrain from using abusive or foul language.
- Refrain from threatening or causing bodily harm to self, other participants, or staff.
- Show respect for equipment, supplies and facilities.
- Not possess any weapons.

A positive approach will be used regarding discipline. Staff will periodically review rules with participants during the program session. If inappropriate behavior occurs, a prompt resolution will be sought specific to each individual situation. The Park District reserves the right to dismiss a participant whose behavior endangers his or her own safety or the safety of others. If undesired behavior outcomes require a disability-related accommodation, the parent/guardian must request reasonable accommodations before participation. All accommodations will be made on a case-by-case basis. Contact the Special Recreation Manager at 815-547-5711 x600 to begin the accommodation process.

## Cell Phone Use

The use of cell phones in Park District restrooms or locker rooms is strictly prohibited.

## Parks and Conservation Foundation

The Parks and Conservation Foundation may be just what you're looking for. Established in 1992, the Parks and Conservation Foundation's mission is to assist the Belvidere Park District and the Boone County Conservation District to acquire and develop land. To date, the Parks and Conservation Foundation holds title to over 1 million dollars worth of land through grants. Please consider a donation of money to the Foundation's general fund. Since the Parks and Conservation Foundation has a 501 (C)(3) status, all gifts are tax deductible.

## Firearms Concealed and Carry Act

Passed July 2013, this act forbids carrying a concealed weapon into governmental buildings and parks, which includes all Belvidere Park District facilities and parks. When you enter our facilities and parks, you will see signs posted at the entrances that are approved by the Illinois State Police to remind all patrons of the law.

## Park Ordinances

All ordinances can be found at [belviderepark.org](http://belviderepark.org).

## Wildlife

Feeding wildlife and geese is strictly prohibited in order to preserve our parks' natural environment.

## Errors and Omissions

Belvidere Township Park District retains the right to make changes to correct typographical errors or omissions that may or may not appear in this brochure

## Americans with Disabilities Act

Belvidere Park District welcomes the opportunity to assist people with disabilities. If you need any accommodation due to a disability, please contact the Special Recreation Manager at (815) 547-5711 ext. 600.

## Resident/Non-Resident Fee Policy

Belvidere Park District residents make significant contributions to the operation of the district through their property taxes. This contribution is beyond the program and service fees. Residents (R) receive discounted program fees. Patrons living outside the boundaries are required to pay the non-resident (NR) fee to equalize fee structures, where applicable. The following programs may not have different fee structures for residents and non-residents: special recreation, facility/shelter rentals, field rentals, contracted trips, adult athletic team league fees, tournaments and daily admissions. To qualify for the resident fee, the participant and/or their parent/guardian (where applicable) must be a resident in the Belvidere Park District boundaries.

## The Belvidere Park District boundaries are:

North Boundary: South side of Orth Road • South Boundary: U.S. 20 by-pass West Boundary: Winnebago/Boone County line • East Boundary: Poplar Grove Rd. \*Also included in the district boundaries are Farmington Fields, Wycliffe, Aderdeen Knolls and Oakbrook Woods subdivisions.

## Disc Golf Course

Belvidere's disc golf course is located in Belvidere Park. This 9-hole course is nestled throughout the park among mature trees and is fun for beginners and a challenge for experts. For a course map, visit our website at [belviderepark.org](http://belviderepark.org) or stop at the Administration Office or Rivers Edge Recreation Center to pick one up.

## Shelter Rentals

Various park locations are available to rent April through October. We begin taking shelter reservations February 1st for the year. Shelter reservations must be accompanied by a reservation form and shelter payment. A minimum 72 hour notice is required for all rentals and are subject to availability. Please see page 21 for shelter locations. For more information, please call (815) 547-9557. Or reserve a shelter at [belviderepark.org](http://belviderepark.org).

## No Smoking / Vaping Policy

Please comply with the no smoking/vaping policy. Smoking/vaping stations are placed near facilities for your use. Please be considerate of others and the environment and use these stations.

## Memorial Bench & Tree Program

Prairie Fields Sports Park Benches/Doty Park Benches • Memorial Trees

The Belvidere Park District provides options for a living memorial for friends and family. For additional information on our memorial programs, contact (815) 547-5711 x103.

## Photo Policy

The Belvidere Park District photographs and videotapes program participants. By using our facilities, registering for a program or being involved with an activity/event, the participant consents to use by the Belvidere Park District of her/his likeness in Park District promotions and other uses.

## Bilingual Interpreter

The Belvidere Park District strives to meet the needs of our diverse community. Please let us know if we can provide a bilingual interpreter for program and activity information with an appointment.

## Other

Alcohol is prohibited on all Park District property. For the safety of your pets and others, please keep your pet on a leash at all times and clean up after your pet. Observe speed limits. Put waste in its place and use recycling containers. Snowmobiling, off-road and all-terrain vehicles are prohibited on Park District property. All District Ordinances can be found at [belviderepark.org/aboutus](http://belviderepark.org/aboutus).







1006 W. Lincoln Ave.  
Belvidere, IL 61008  
815-547-5711

\*\*\*\*\*ECRWSEDDM\*\*\*\*\*

LOCAL  
POSTAL CUSTOMER

Prsrt Mkt  
U.S. Postage  
Paid  
Columbus, WI  
Permit No. 73

**Edward Jones**

> [edwardjones.com](http://edwardjones.com) | Member SIPC

Dreaming up the ideal retirement is your job. Helping you get there is ours.

We're excited to hear from you.



**Eric R Dahl, CFP®, ChFC®, AAMS™**  
Financial Advisor

907 Alexandra Dr  
Belvidere, IL 61008  
815-544-5984

## MEMORIAL BENCH & TREE PROGRAM

The Belvidere Park District invites all to honor departed family members and friends by planting a memorial tree or installing a bench in a public park or along a trail.

For more information, please contact Jonathan Cudzewicz, Superintendent of Parks, 815-547-5711 x103 or [jcudzewicz@belviderepark.org](mailto:jcudzewicz@belviderepark.org)

